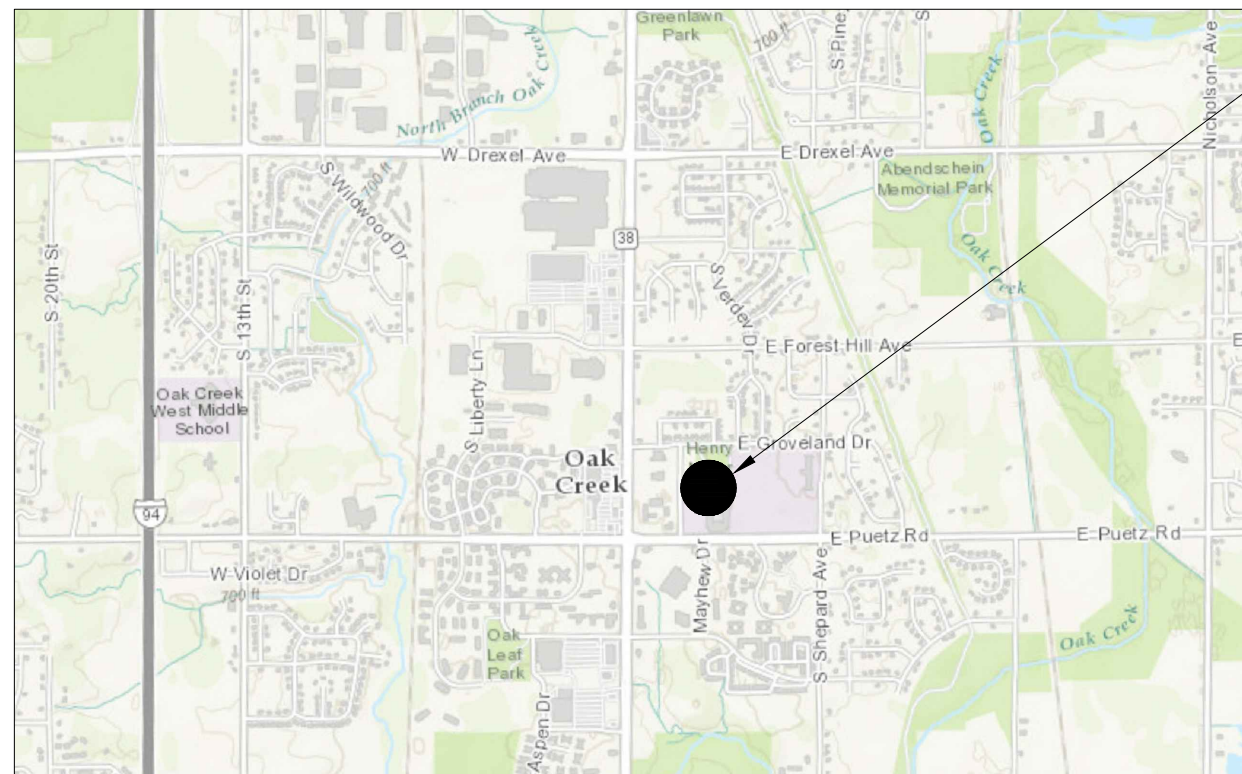
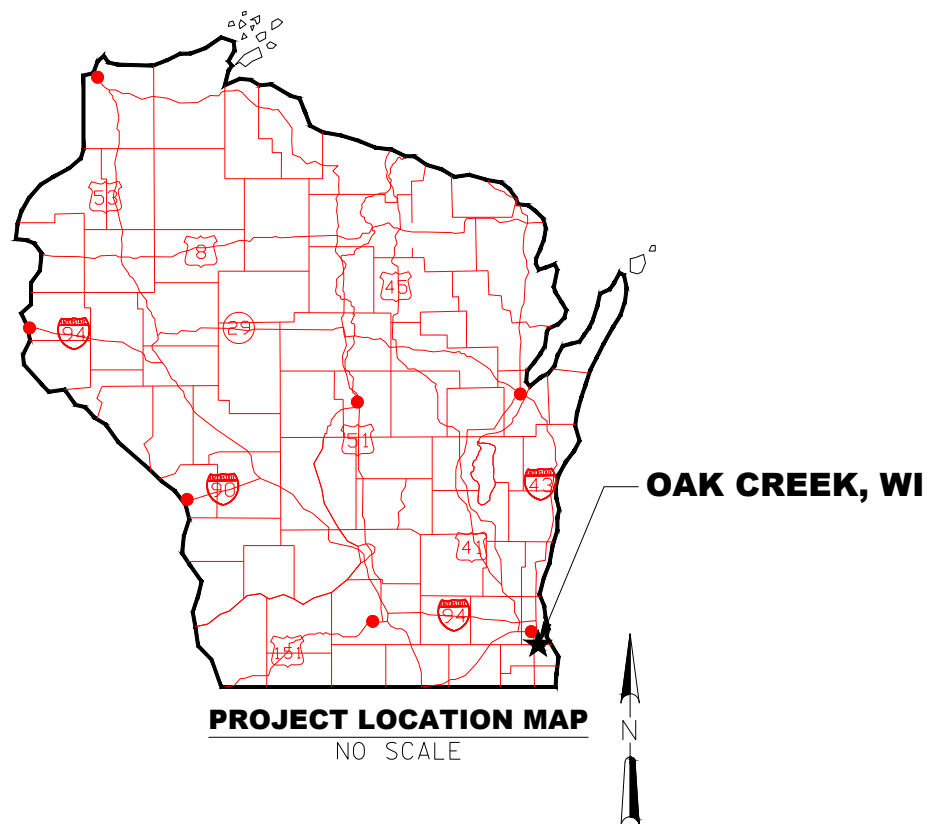


# WELL NOS. 1 AND 3 ABANDONMENT AND RESERVOIR DEMOLITION

## FOR THE OAK CREEK WATER AND SEWER UTILITY MILWAUKEE COUNTY, WISCONSIN MAY, 2017



**PROJECT LOCATION MAP**

NO SCALE

**DIGGERS HOTLINE**  
Dial 811 or (800) 242-8511  
www.DiggersHotline.com

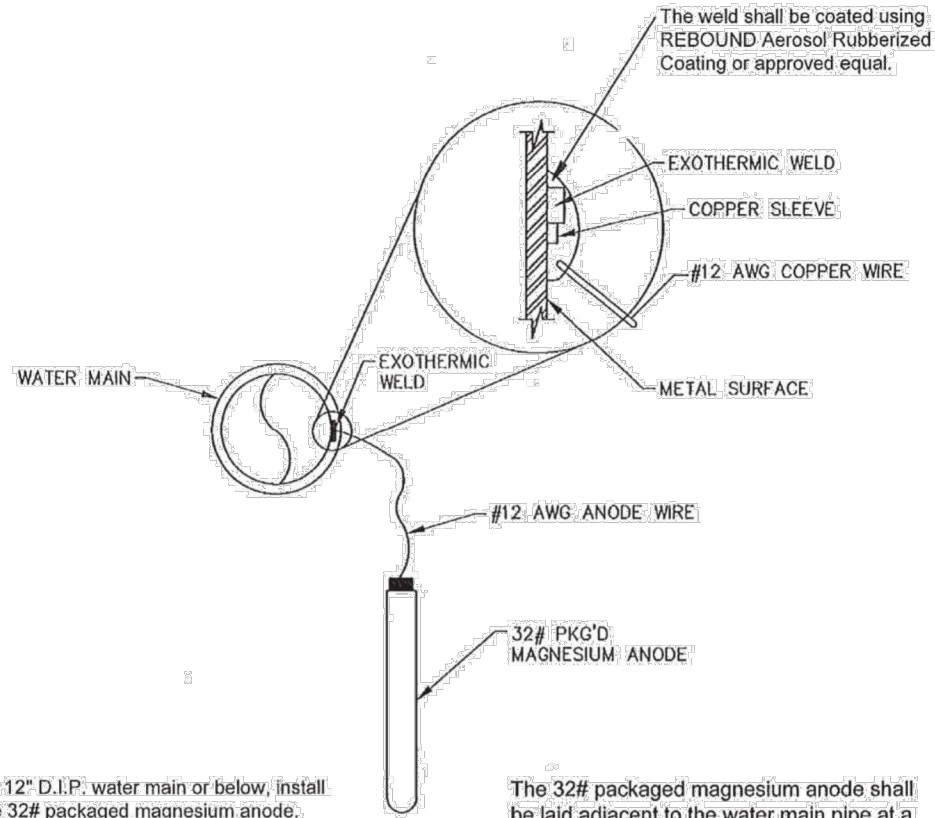
SA.XXX ST. W. G. E. T. I. TS. PP.		CITY OF OAK CREEK, WISCONSIN			APPROVED BY	
					UTILITY ENGINEER DATE	
		DESIGNED BY DATE DRAWN BY DATE CHECKED BY DATE			APPROVED BY	
		B.W. 5/25/17 V.S. 5/25/17 S.K. 5/25/17				
		TITLE SHEET				
REVISION BY DATE			CITY ENGINEER DATE		SCALE SHEET	
			PLAN HOR. N/A		1 OF	
			PROFILE HOR. N/A			
			VER. N/A		7	

FILE NO: 17104-1C-2342







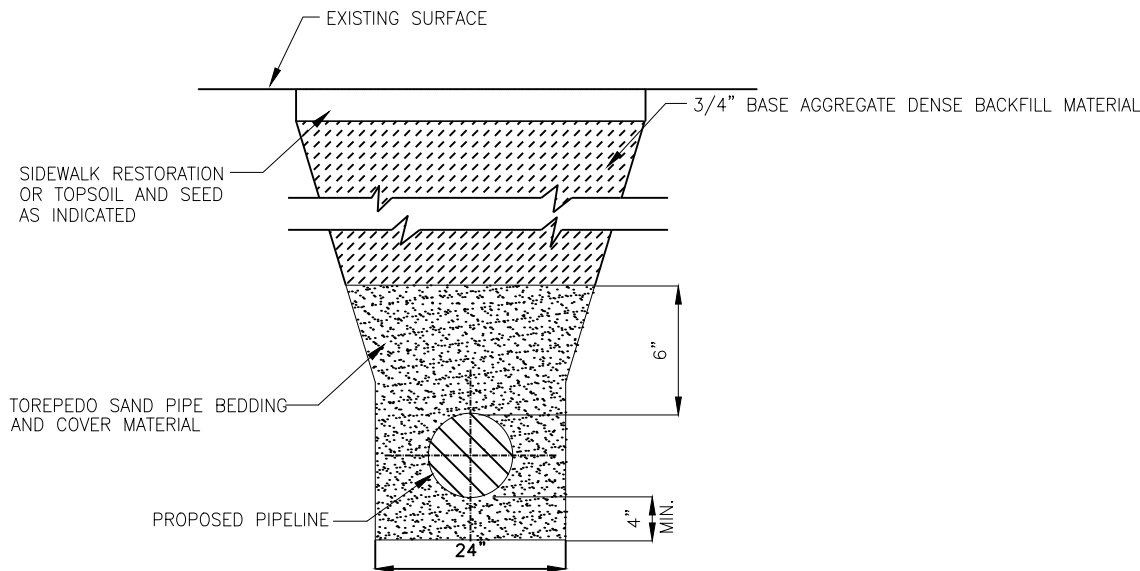


For 12" D.I.P. water main or below, install one 32# packaged magnesium anode.  
For 16" D.I.P. water main or above, install two 32# packaged magnesium anodes.

The 32# packaged magnesium anode shall be laid adjacent to the water main pipe at a point that allows for the greatest separation between anode and water main.

### GALVANIC ANODE INSTALLATION

N.T.S.

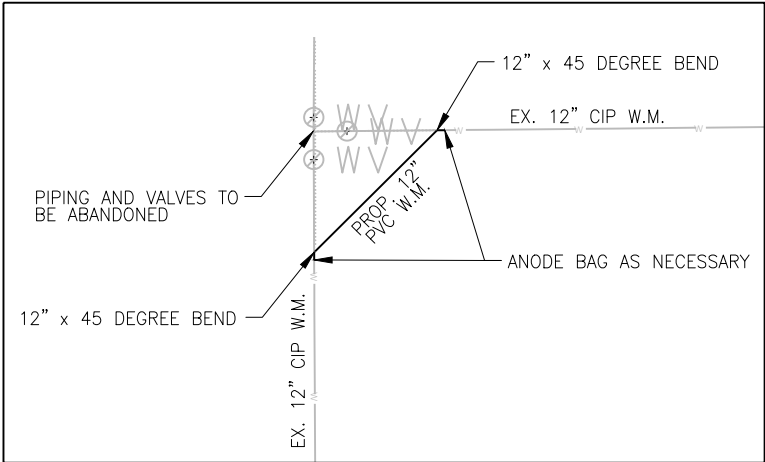


### TYPICAL TRENCH DETAIL

NO SCALE

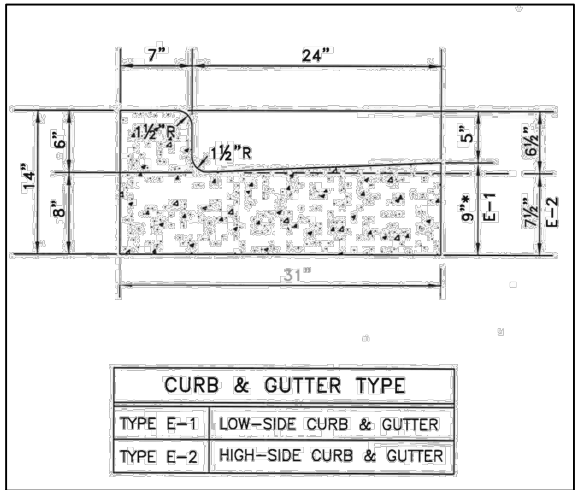
This is to cerify that this plan was approved by the Water Works and Sewer Utility Commission of Oak Creek at a regular meeting

Utility Engineer Date



### CONNECTION DETAIL

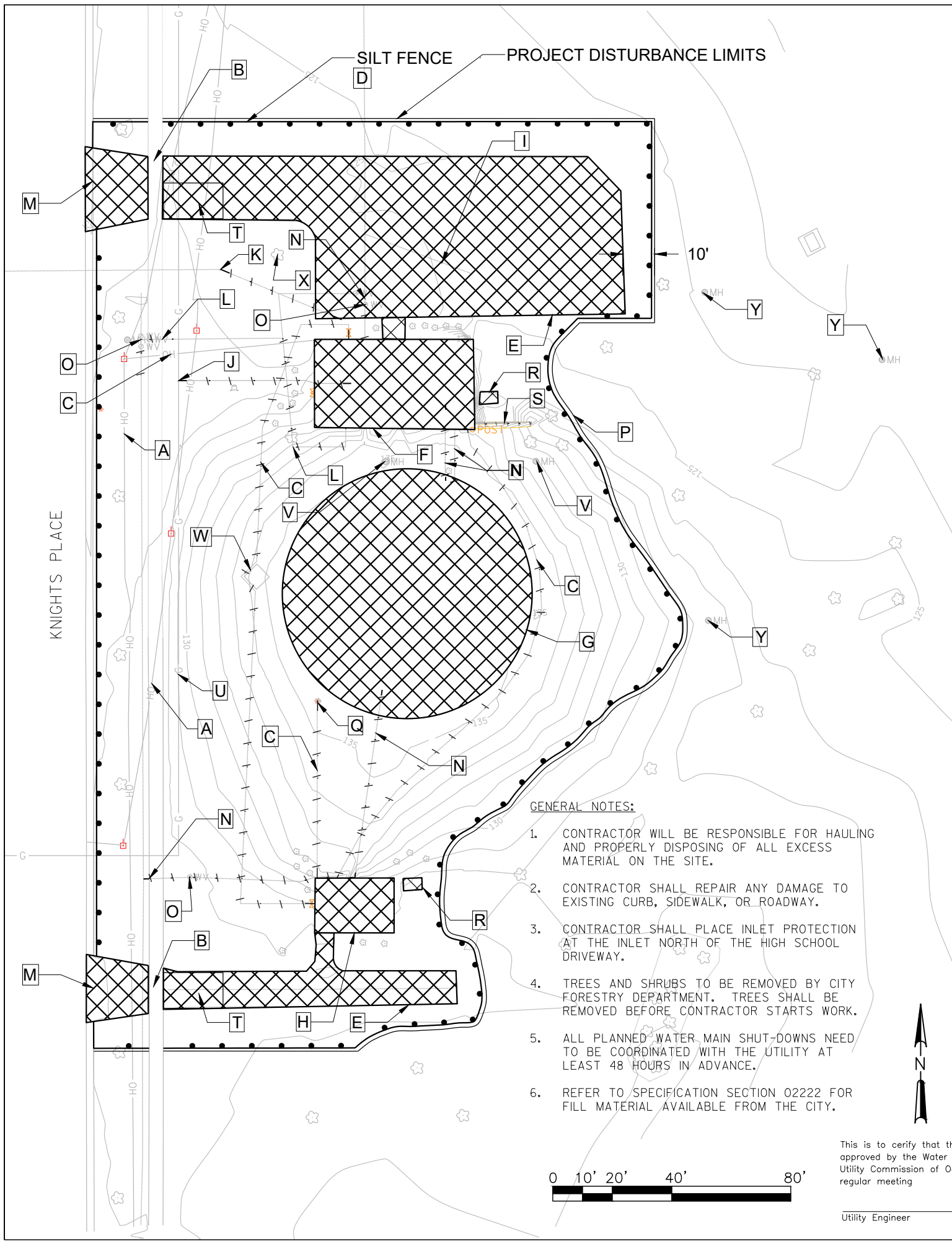
NO SCALE



### CURB AND GUTTER DETAIL

NO SCALE

SA.	CITY OF OAK CREEK, WISCONSIN				APPROVED BY						
ST.											
W.		DESIGNED BY	DATE	DRAWN BY	DATE	CHECKED BY	DATE				
G.		B.W.	5/25/17	V.S.	5/25/17	S.K.	5/25/17				
E.		DETAILS						APPROVED BY			
T.								CITY ENGINEER		DATE	
I.								SCALE		SHEET	
TS.								PLAN		4	
PP.								HOR. <u>N/A</u>		OF	
								PROFILE			
		HOR. <u>N/A</u>		7							
		VER. <u>N/A</u>									
		APPROVED BY COUNCIL RESOLUTION NO.				FILE NO: 17104-4C-2345					



DEMOLITION NOTES:

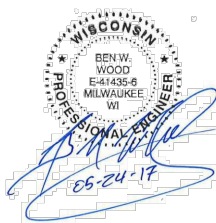
- A. EXISTING OVERHEAD LINES TO REMAIN AND SHALL BE PROTECTED.
- B. EXISTING SIDEWALK TO REMAIN AND SHALL BE PROTECTED.
- C. CONTRACTOR TO COORDINATE WITH WE ENERGIES TO DEMOLISH ELECTRICAL SERVICE. EXISTING ELECTRICAL SERVICE TO BE TERMINATED AT EXISTING OVERHEAD TRANSFORMER. WE ENERGIES SHALL DENERGIZE EXISTING UNDERGROUND ELECTRICAL AT UTILITY POLE. CONTRACTOR TO REMOVE ABANDONED ELECTRICAL CONDUIT IF ENCOUNTERED DURING DEMOLITION.
- D. SILT FENCE SHALL BE INSTALLED AND MAINTAINED BY CONTRACTOR.
- E. CONTRACTOR SHALL REMOVE DRIVEWAY IN ITS ENTIRETY.
- F. CONTRACTOR SHALL REMOVE WELL HOUSE NO. 1 IN ITS ENTIRETY. DEMOLITION SHALL INCLUDE REMOVAL OF ALL PIPING IN THE PIPE GALLERY AND CONTRACTOR CAN REMOVED PIPE GALLERY FLOOR IN ITS ENTIRETY. CONTRACTOR SHALL ABANDON WELL, DEMOLISH STRUCTURE, PROVIDE FLOOR PENETRATIONS AND BACKFILL AS SPECIFIED. ALL PIPING 2 FEET BELOW FINISHED GRADE AND NOT REMOVED BY THE CONTRACTOR SHALL BE ABANDONED IN PLACE AND PLUGGED.
- G. CONTRACTOR SHALL REMOVE RESERVOIR TO CONCRETE FLOOR ELEVATION (APPROXIMATELY 124.5'). CONTRACTOR SHALL REMOVE ALL PIPING, CONCRETE PIERS, CONCRETE COLUMNS, AND PIPE SUPPORTS INSIDE OF THE RESERVOIR. CONTRACTOR TO DEMOLISH, PROVIDE FLOOR PENETRATIONS AND BACKFILL AS SPECIFIED.
- H. CONTRACTOR SHALL REMOVE WELL HOUSE NO 3 IN ITS ENTIRETY. CONTRACTOR TO ABANDON WELL, DEMOLISH STRUCTURE AND BACKFILL AS SPECIFIED. ALL PIPING 2 FEET BELOW FINISHED GRADE AND NOT REMOVED BY THE CONTRACTOR SHALL BE ABANDONED IN PLACE AND PLUGGED.
- I. EXISTING WATER SERVICE TO PARK SHALL REMAIN AND BE PROTECTED.
- J. CONTRACTOR TO COORDINATE WITH WE ENERGIES TO DEMOLISH GAS SERVICE. SERVICE SHALL BE CAPPED NEAR MAIN FOR FUTURE USE. CONTRACTOR TO REMOVE ABANDONED GAS PIPING IF ENCOUNTERED DURING DEMOLITION.
- K. CONTRACTOR TO REMOVE EXISTING SANITARY LATERAL TO EXISTING BEND AS SHOWN ON THE PLAN. SANITARY SEWER SERVICE TO BE PLUGGED AND CAPPED FOR FUTURE USE.
- L. CONTRACTOR SHALL ABANDON WATERMAIN AFTER LOOPING MODIFICATIONS HAVE BEEN COMPLETED. SEE CONNECTION DETAIL ON SHEET 4.
- M. REMOVE EXISTING DRIVEWAY APRON AND CURB AND GUTTER.
- N. WATERMAIN TO BE ABANDONED IN PLACE AND PLUGGED.
- O. WATER VALVES WILL BE ABANDONED IN PLACE, AND VALVE STEM WILL BE REMOVED.
- P. TREE PROTECTION FENCING TO BE ERECTED AND REMOVED BY CITY FORESTRY DEPARTMENT. THIS FENCE DELINEATES A NO ENTRY ZONE WHERE NO CONSTRUCTION EQUIPMENT, MATERIALS, SOIL, OR ANY OTHER MATERIALS SHALL BE PLACED, PARKED, OR STORED ON THE SURFACE OF ANY UNPAVED AREA WITHIN THE TREE PROTECTION ZONE.
- ▲
- Q. EXISTING LIGHT POLE TO BE REMOVED.
- R. REMOVE EXISTING OVERFLOW PIPING STRUCTURE AND ALL ASSOCIATED PIPING 2 FEET BELOW PROPOSED GRADE. ALL PIPING 2 FEET BELOW FINISHED GRADE AND NOT REMOVED BY THE CONTRACTOR SHALL BE ABANDONED IN PLACE AND PLUGGED.
- S. REMOVE EXISTING WALL.
- T. CONTRACTOR SHALL INSTALL A 20-FOOT BY 12-FOOT TRACKING PAD TO PREVENT CONTRACTOR FROM TRACKING DIRT ON ROADWAY. CONTRACTOR SHALL HAVE TRACKING PAD IN PLACE BEFORE ANY SITE DEMOLITION BEGINS.
- U. CONTRACTOR TO PROTECT EXISTING 12-INCH GAS MAIN.
- V. REMOVE STORM SEWER MANHOLE IN ITS ENTIRETY. ALL STORM SEWER PIPING ENCOUNTERED DURING MANHOLE DEMOLITION SHALL BE FILLED WITH FLOWABLE FILL AND ABANDONED IN PLACE.
- W. CONTRACTOR TO REMOVE BURIED CONCRETE PAD, IF ENCOUNTERED.
- X. REMOVED BY CITY FORESTRY DEPARTMENT AT A COST OF TWO FOR ONE REPLACEMENT.
- Y. MANHOLES TO BE REMOVED TO 2 FEET BELOW EXISTING GROUND ELEVATION. ALL STORM SEWER PIPING CONNECTED TO MANHOLES SHALL BE FILLED WITH FLOWABLE FILL AND ABANDONED IN PLACE. CONTRACTOR TO RESTORE AND SEED AS SPECIFIED. ALL WORK OUTSIDE OF PROJECT DISTURBANCE AREA MUST BE COMPLETED USING LIGHT WEIGHT EQUIPMENT APPROVED BY UTILITY.

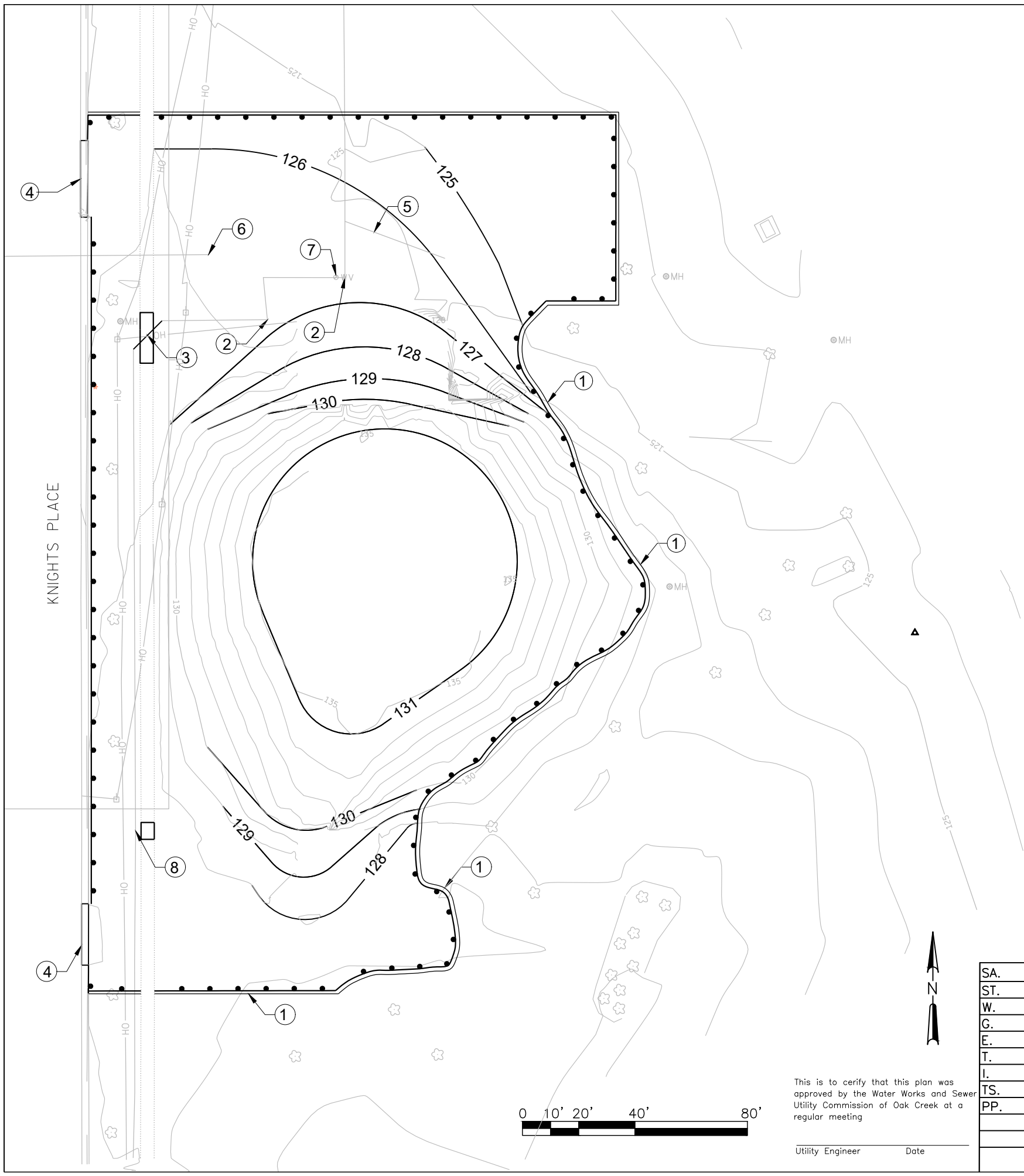
GENERAL NOTES:

1. CONTRACTOR WILL BE RESPONSIBLE FOR HAULING AND PROPERLY DISPOSING OF ALL EXCESS MATERIAL ON THE SITE.
2. CONTRACTOR SHALL REPAIR ANY DAMAGE TO EXISTING CURB, SIDEWALK, OR ROADWAY.
3. CONTRACTOR SHALL PLACE INLET PROTECTION AT THE INLET NORTH OF THE HIGH SCHOOL DRIVEWAY.
4. TREES AND SHRUBS TO BE REMOVED BY CITY FORESTRY DEPARTMENT. TREES SHALL BE REMOVED BEFORE CONTRACTOR STARTS WORK.
5. ALL PLANNED WATER MAIN SHUT-DOWNS NEED TO BE COORDINATED WITH THE UTILITY AT LEAST 48 HOURS IN ADVANCE.
6. REFER TO SPECIFICATION SECTION 02222 FOR FILL MATERIAL AVAILABLE FROM THE CITY.

This is to certify that this plan was approved by the Water Works and Sewer Utility Commission of Oak Creek at a regular meeting

Utility Engineer Date

SA.		CITY OF OAK CREEK, WISCONSIN				APPROVED BY			
ST.						UTILITY ENGINEER		DATE	
W.		DESIGNED BY	DATE	DRAWN BY	DATE	APPROVED BY			
G.		B.W.	5/25/17	V.S.	5/25/17	S.K.	5/25/17		
E.		DEMOLITION PLAN				CITY ENGINEER		DATE	
T.						SCALE		SHEET	
I.						PLAN	HOR.	N/A	5
TS.						PROFILE	HOR.	N/A	OF
PP.						VER.	N/A	7	
			APPROVED BY COUNCIL RESOLUTION NO.				FILE NO: 17104-5C-2346		



This is to certify that this plan was approved by the Water Works and Sewer Utility Commission of Oak Creek at a regular meeting

Utility Engineer \_\_\_\_\_ Date \_\_\_\_\_

GENERAL NOTES:

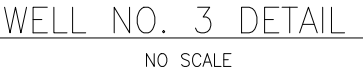
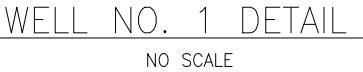
1. CONTRACTOR SHALL PROVIDE TEMPORARY SEEDING UNTIL SPECIFIED DATE FOR PERMANENT SEEDING.
2. WATERMAIN WORK TO BE COMPLETED BEFORE DEMOLITION OF RESERVOIR AND WELL HOUSES.

KEY NOTES:

1. TREE PROTECTION FENCING SHALL BE ERECTED AND REMOVED BY THE CITY FORESTRY DEPARTMENT. THIS FENCE DELINEATES A NO ENTRY ZONE WHERE NO CONSTRUCTION EQUIPMENT, MATERIALS, SOIL, OR ANY OTHER MATERIALS SHALL BE PLACED, PARKED, OR STORED ON THE SURFACE OF ANY UNPAVED AREA WITHIN THE TREE PROTECTION ZONE.
2. WATERMAIN TO BE TERMINATED AND RESTRAINED AT TEE. CONTRACTOR TO PROVIDE TERMINATION FITTING AS REQUIRED FOR EXISTING TEE.
3. NEW WATERMAIN WHICH WILL ALLOW INOPERABLE VALVES TO BE REMOVED. CONTRACTOR WILL COORDINATE WITH WATER UTILITY IF WATERMAIN NEEDS TO BE SHUT DOWN FOR WATERMAIN WORK. CONTRACTOR SHALL REPLACE SIDEWALK AT WATERMAIN CROSSING AT FULL SECTIONS TO MATCH EXISTING. ANY PLANNED WATER SHUT-DOWNS NEED TO BE COORDINATED AT LEAST 48 HOURS IN ADVANCE WITH UTILITY.
4. CONTRACTOR SHALL REPLACE CURB AND GUTTER AT DRIVEWAY ENTRANCES WITH NEW CURB AND GUTTER WITH CURB HEIGHT TO MATCH ADJACENT. SEE CURB AND GUTTER DETAIL.
5. WATER SERVICE TO BE MAINTAINED AND PROTECTED.
6. SANITARY SERVICE TO BE CAPPED FOR FUTURE USE.
7. WATER VALVE BOX TO BE ADJUSTED TO MEET PROPOSED GRADE.
8. WATERMAIN TO BE TERMINATED AND RESTRAINED AT EXISTING TEE. CONTRACTOR SHALL REPLACE SIDEWALK AS NEEDED. FULL SECTIONS SHALL BE REPLACED. CONTRACTOR TO PROVIDE TERMINATION FITTING AS REQUIRED FOR EXISTING TEE.

SA.	CITY OF OAK CREEK, WISCONSIN				APPROVED BY _____								
ST.					UTILITY ENGINEER _____		DATE _____						
W.		DESIGNED BY _____		DATE _____	DRAWN BY _____		DATE _____	CHECKED BY _____		DATE _____			
G.		B.W.		5/25/17	V.S.	5/25/17	S.K.	5/25/17					
E.		SITE PLAN								CITY ENGINEER _____		DATE _____	
T.										SCALE _____		SHEET _____	
I.										PLAN HOR. _____		6	
TS.	PROFILE HOR. _____		OF										
PP.	VER. _____		7										
	APPROVED BY COUNCIL RESOLUTION NO. _____								FILE NO: 17104-6C-2347				





1. THE DETAILS SHOWN ON THIS SHEET ARE FROM CERTAIN DRAWINGS INCLUDED IN THE SPECIFICATIONS IN APPENDIX C. SEE APPENDIX C AND PARAGRAPH 1.04 OF SECTION 02050 FOR ADDITIONAL DETAILS.

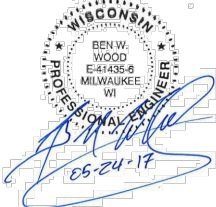
1. CONTRACTOR SHALL REMOVE PIPING FROM PIPE GALLERY.
2. CONTRACTOR SHALL PROVIDE 2-FOOT BY 2-FOOT HOLE IN THE CONCRETE FLOOR OF PIPE GALLERY FOR DRAINAGE.
3. WELL PUMP EQUIPMENT HAS BEEN REMOVED FROM WELL NO. 1.

1. CONTRACTOR SHALL REMOVE WELL PUMP EQUIPMENT AND ACCESSORIES BEFORE WELL DEMOLITION.

1. CONTRACTOR SHALL REMOVE ALL PIPING FROM RESERVOIR.
2. CONTRACTOR SHALL REMOVE RESERVOIR TO AN ELEVATION OF CONCRETE FLOOR (APPROXIMATELY 124.5'). CONTRACTOR SHALL REMOVE ALL PIPE, CONCRETE PIERS, CONCRETE COLUMNS AND PIPE SUPPORTS.
3. CONTRACTOR SHALL PROVIDE 2-FOOT BY 2-FOOT HOLES SPACED 20 FEET ON CENTER IN THE CONCRETE FLOOR SLAB OF THE RESERVOIR FOR DRAINAGE.
4. ELEVATIONS NOTED ON RESERVOIR DETAIL ARE APPROXIMATE AND BASED ON AS-BUILT INFORMATION. CONTRACTOR TO CONFIRM ELEVATIONS IN THE FIELD.



Utility Engineer	Date
------------------	------

SA.		CITY OF OAK CREEK, WISCONSIN						APPROVED BY		
ST.		DESIGNED BY      DATE      DRAWN BY      DATE      CHECKED BY      DATE B.W.      5/25/17      V.S.      5/25/17      S.K.      5/25/17						UTILITY ENGINEER      DATE		
W.								APPROVED BY		
G.		DEMOLITION DETAILS						CITY ENGINEER      DATE		
E.								SCALE	SHEET	
T.								PLAN	7	
I.								HOR.    N/A	OF	
TS.							PROFILE			
PP.							HOR.    N/A			
							VER.    N/A			
							7			
			APPROVED BY COUNCIL RESOLUTION NO.						FILE NO: 17104-7C-2348	